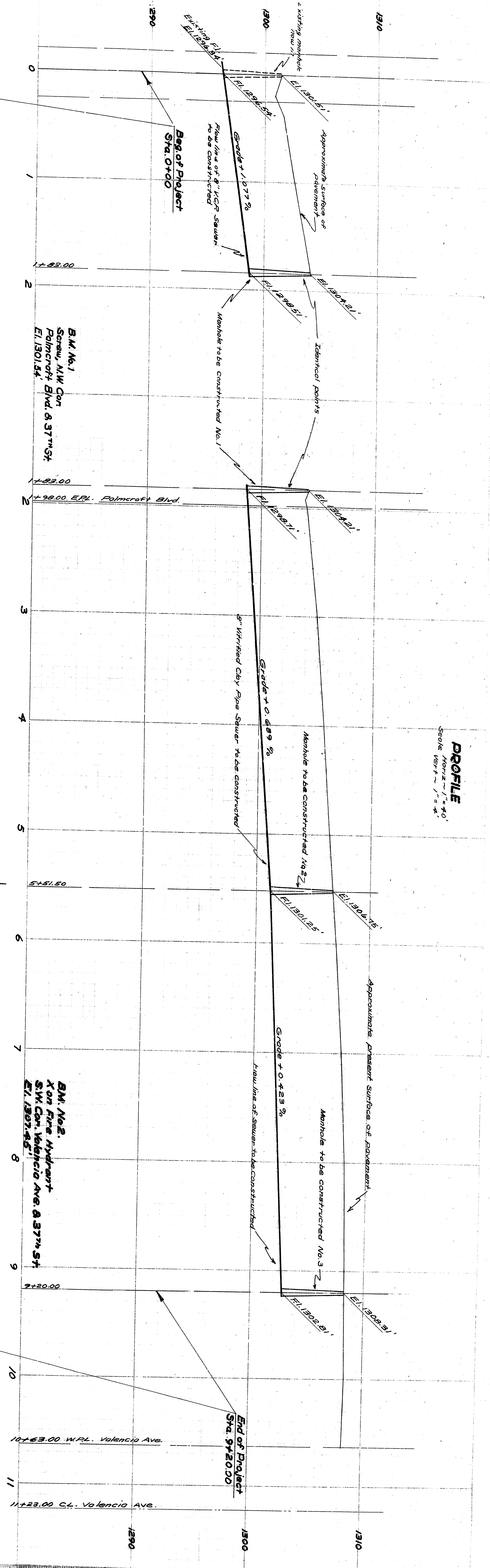


PLAN  
Scale - 1"=40'



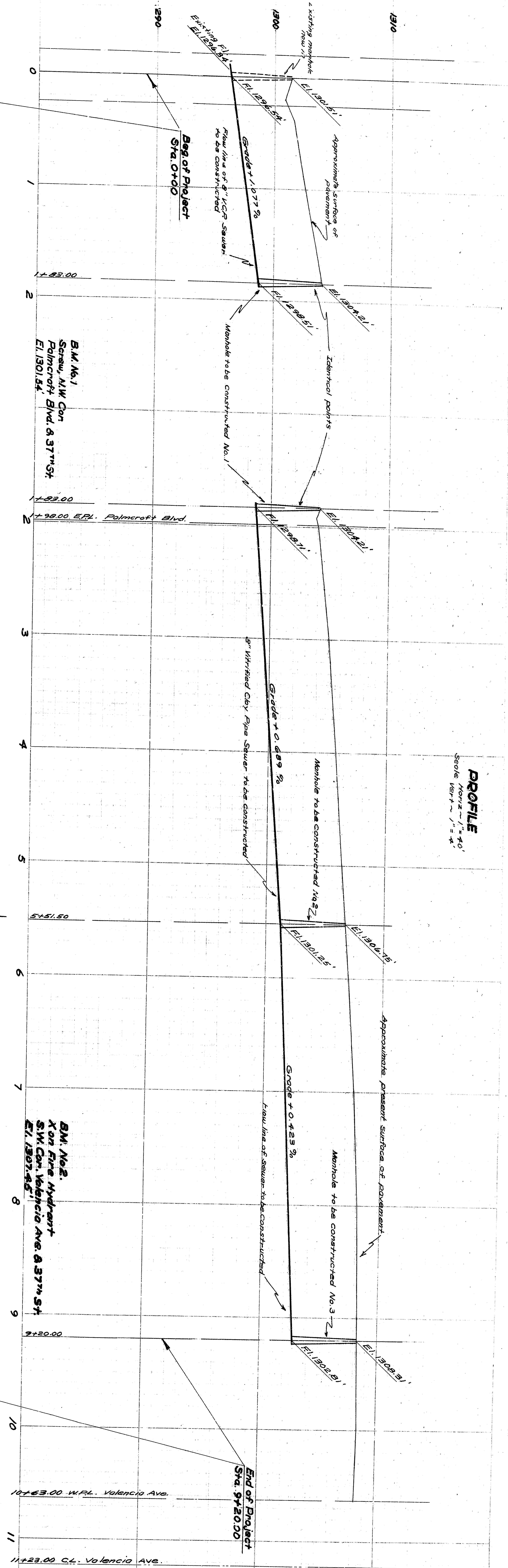
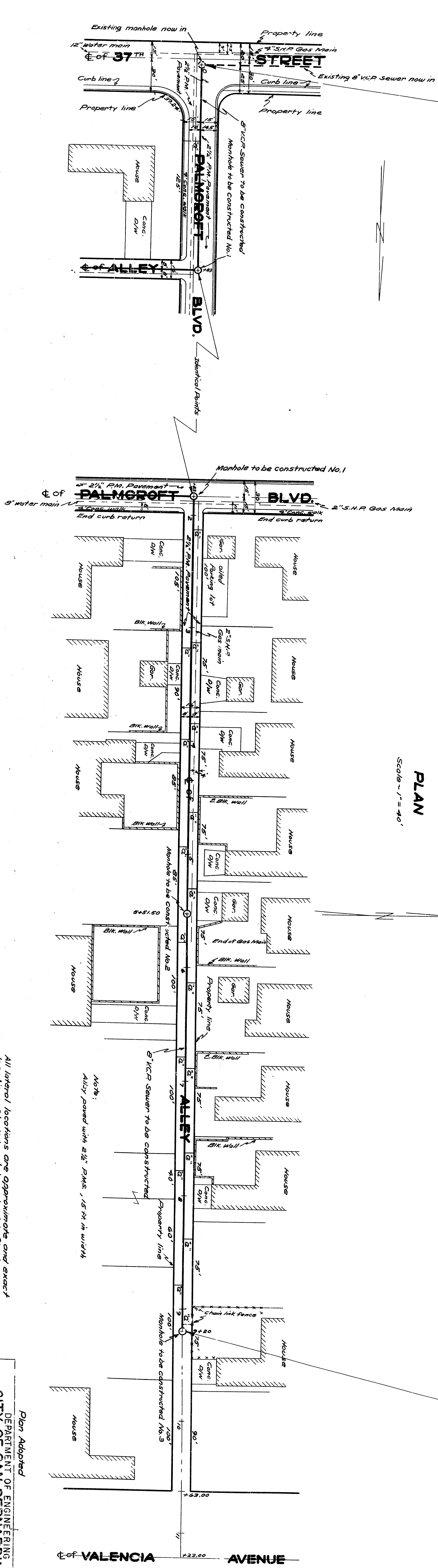
PROFILE  
Scale - 1"=40'  
Vertical - 1"=40'

All lateral locations are approximate and exact locations shall be determined in field.  
 8" x 8" tiles with 1" connecting sewers to be constructed shown thus .  
 All work embodied on these plans shall be done in conformity with applicable provisions of specifications No. 2001.  
 All utility City D.S. house connecting sewer shall be constructed on or near the main sewer and shall extend from main sewer to their property line.

Plan Adopted  
**DEPARTMENT OF ENGINEERING**  
**CITY OF SAN BERNARDINO**  
**ALLEY NORTH OF 37<sup>TH</sup> STREET**  
 Palmcrest Blvd to Valencia Ave.  
**SEWER**

SUBMITTED BY:   
 APPROVED: JULY 20, 1954  
 REGISTERED CIVIL ENGINEER NO. 2825

REFERENCE:  
 DRAWING NO. 2233  
 SHEET NO. 1 OF 1  
 CHECKED BY:   
 REGISTERED CIVIL ENGINEER NO. 2825



PLAN  
Scale - 1" = 40'

PROFILE  
Scale: Horiz. 1" = 40'  
Vert. 1" = 4'

All lateral locations are approximate and exact locations shall be determined in field.  
 8" x 8" manholes with 4" connecting sewers to be constructed shown thus .  
 All work embodied on these plans shall be done in conformity with applicable provisions of specifications No. 2061.  
 All utility City D.S. house connecting sewer shall be constructed on top of sidewalk or on side curb from main sewer and shall extend from main sewer to the property line.

Plan Adopted  
 DEPARTMENT OF ENGINEERING  
 CITY OF SAN BERNARDINO  
**ALLEY NORTH OF 37TH STREET**  
 Palmcroft Blvd to Valencia Ave.  
**SEWER**

DATE: July 20, 1954  
 DRAWN BY: [Signature]  
 CHECKED BY: [Signature]  
 REGISTERED CIVIL ENGINEER NO. 2085